



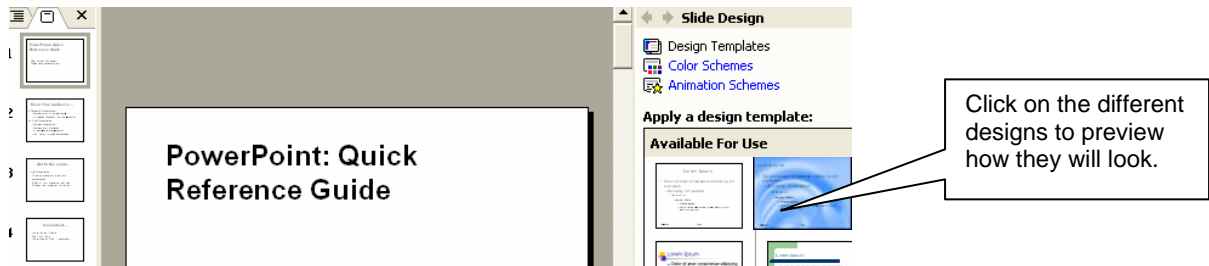
MS PowerPoint: Background Design

Windows version 2002

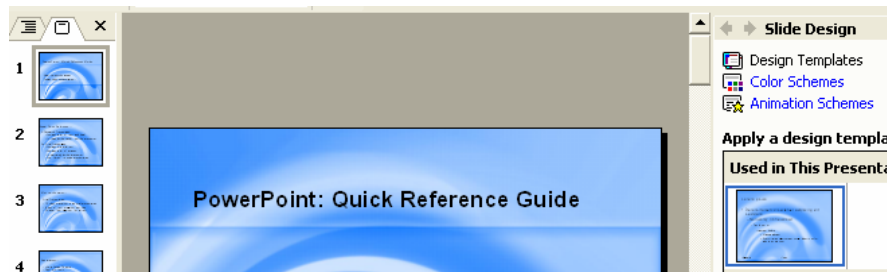
Use the Slide Design feature to give all slides a consistent appearance.

Go to Format>Slide Design.

From the Slide Design choices on the right, choose a template by clicking on the design.



All slides in your presentation will automatically reflect the design template you chose.



You can change the Slide Design at any time.

Remember to check the layout of your text whenever you change the Slide Design.

