

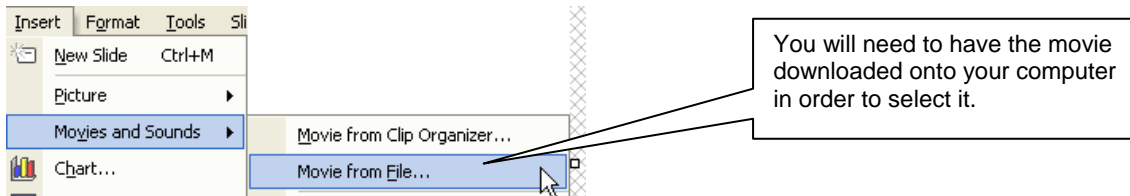


MS PowerPoint: Movie Clips

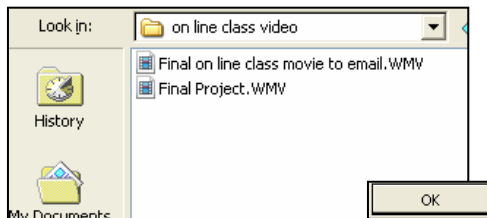
Windows version 2002

Movie clips can be inserted in slides; these clips can be set up to play automatically, or they can be controlled by clicking the mouse. Note: adding movie clips will significantly increase the size of your finished PowerPoint project.

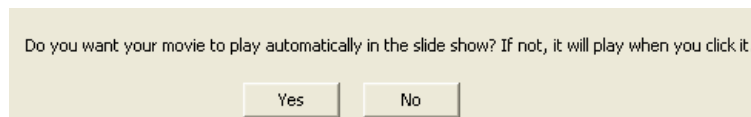
Go to File>Insert>Movies and Sounds>



Navigate to the movie clips, click on the correct clip and then click OK.



You can decide to have the movie clip play automatically or with a mouse click.



Adjust the position and size of the image on the slide.



To remove a movie clip, simply select the picture on the slide and delete it.

